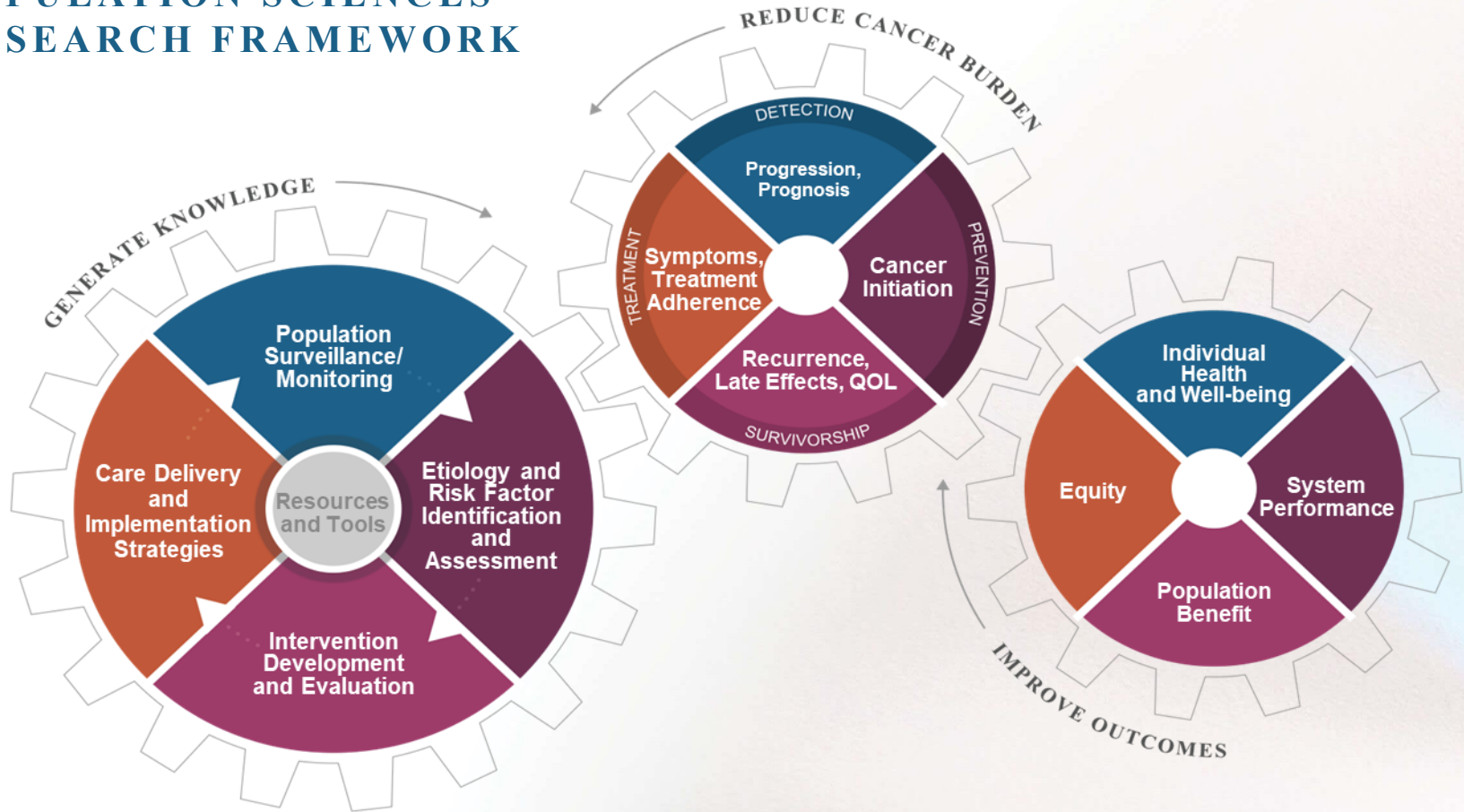


Division of Cancer Control and Population Science (DCCPS)

*Center to Reduce Cancer Health Disparities
Professional Development Workshop*

*April Oh, PhD, MPH
Senior Advisor for Implementation Science and Health Equity
Division of Cancer Control and Population Science, National Cancer Institute, USA*

CANCER CONTROL & POPULATION SCIENCES RESEARCH FRAMEWORK



KEY CROSS-CUTTING AREAS OF FOCUS



Health Equity



Data Strategies



Modifiable Risk Factors



HEALTH EQUITY

Promote cancer control research that leads to equitable and optimal health outcomes for all populations

Preventing and eliminating cancer disparities is fundamental to realizing optimal and equitable health for all populations. Our public health framework for ending cancer as we know it includes addressing avoidable and modifiable determinants of poor health and eliminating persistent injustices through research at the individual, social, institutional, structural, environmental, and policy levels.



Climate Change



Evidence-based Policy



Digital Health

DCCPS Health Disparities and Health Equities Research Areas

DCCPS Health Disparities and Health Equities Research Areas



Longitudinal
Cohort Studies



'Omics
Research



Epidemiological
Studies



Health Care
Delivery
Research



Social and
Behavioral
Intervention
Research

Background and Definitions

Learn about the definitions and concepts behind health disparities, health equity, and the social determinants of health.

Expertise and Contacts in Health Disparities

See who is working in health disparities and health equity research at DCCPS, and find out their areas of expertise.

Health Disparities Events

View upcoming and past events that DCCPS supports or promotes.

<https://cancercontrol.cancer.gov/hdhe/about>

Example Health Disparities and Health Equity Research Priority Areas


Avoiding Pro Forma: A Health Equity–Conscious Approach to Cancer Control Research

Robert T. Croyle, PhD • Janeth I. Sanchez, PhD, MPH • Michelle Doose, PhD, MPH • Amy E. Kennedy, PhD, MPH • Shobha Srinivasan, PhD

Published: December 22, 2021 • DOI: <https://doi.org/10.1016/j.amepre.2021.09.021> •  Check for updates

CA CANCER J CLIN 2020;70:31–46

Understanding and Addressing Social Determinants to Advance Cancer Health Equity in the United States: A Blueprint for Practice, Research, and Policy

Kassandra I. Alcaraz, PhD, MPH ¹; Tracy L. Wiedt, MPH²; Elvan C. Daniels, MD, MPH³; K. Robin Yabroff, PhD⁴; Carmen E. Guerra, MD⁵; Richard C. Wender, MD²

Addressing Social Risks in Cancer Care Delivery Virtual Workshop

- Study Design and Research Methods
- Rural Cancer Control
- Geographically Underserved Areas
 - Persistent Poverty
- Social Determinants of Health
 - Multilevel Interventions
 - Cancer Control Policy Research
- Native American Health
- Sexual and Gender Minority

Example Funding Announcements

Funding	NOFO	Expiration Date
U19 - Advancing Cancer Control Equity Research through Transformative Solutions	RFA-CA-23-026	September 15, 2023
U24 - Advancing Cancer Control Equity Research through Transformative Solutions Coordination Center	RFA-CA-23-027	
R01 - Addressing the Impact of Structural Racism and Discrimination on Minority Health and Health Disparities	PAR-23-112	January 08, 2026
R01 - Measures and Methods to Advance Research on Minority Health and Health Disparities-Related Constructs	PAR-22-072	May 08, 2024
R01 - The Role of Work in Health Disparities in the U.S.	PAR-21-275	September 08, 2024
R01 - Patient-Clinician Relationship: Improving Health Outcomes in Populations that Experience Health Care Disparities	PAR-22-064	January 08, 2025
R01 - Leveraging Health Information Technology (Health IT) to Address and Reduce Health Care Disparities	PAR-22-145	May 08, 2025

Join us, you are invited!



Bringing Health Communication Data to Life

September 21-22, 2023

<https://conference.luminacorps.com/HINTS2023/>



October 4-5, 2023

https://events.cancer.gov/nci/ccis?cid=eb_govdel

Learn More:



<https://commonfund.nih.gov/compass>

Health Equity Research Hubs
(UC2 Clinical Trial Optional)

<https://grants.nih.gov/grants/guide/notice-files/NOT-RM-23-018.html>

Questions? April.oh@nih.gov